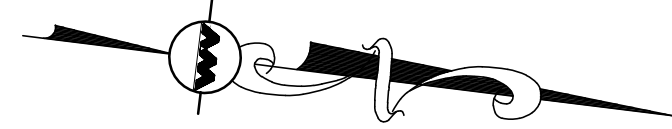


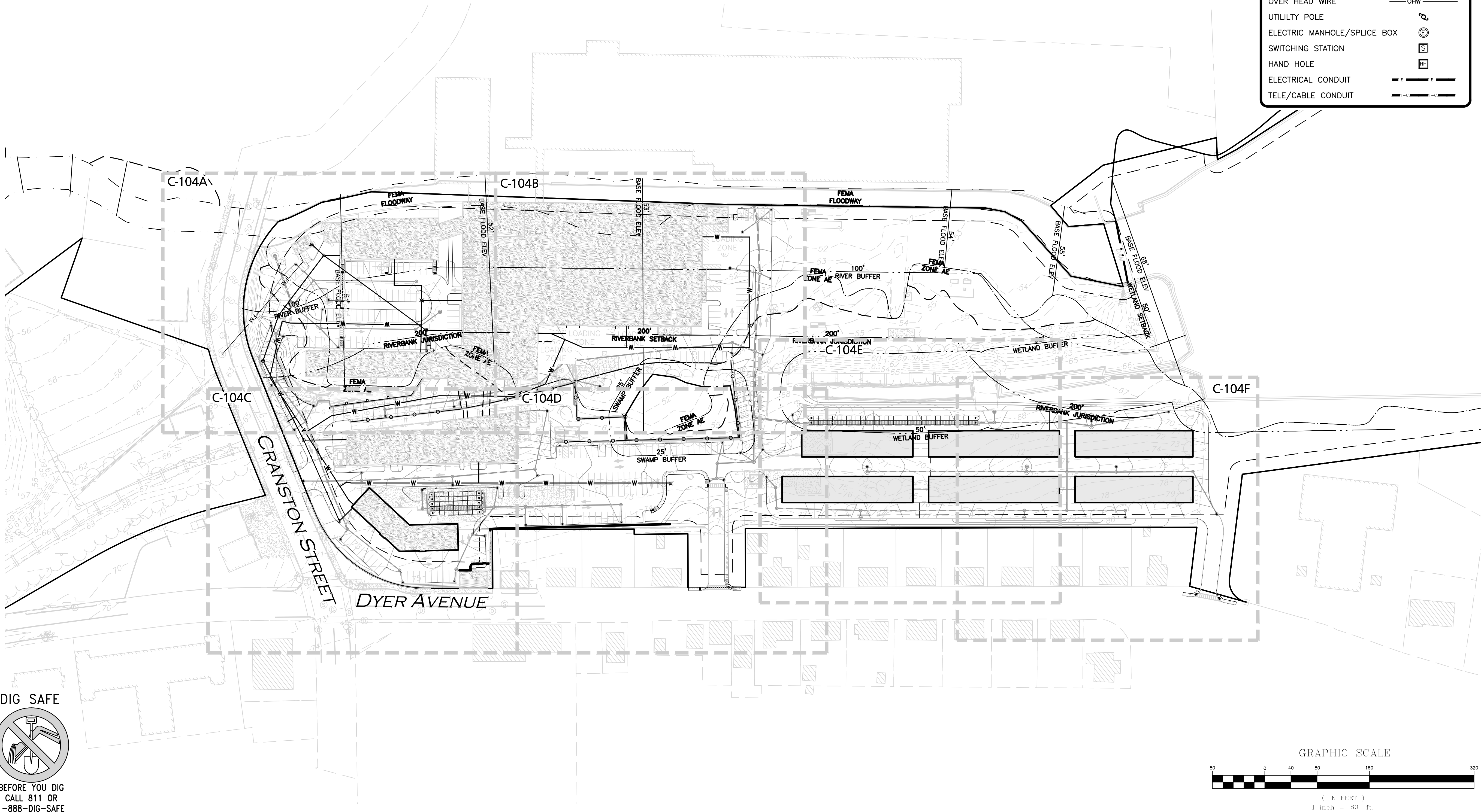
UTILITY NOTES:

1. A MINIMUM OF 10 FEET CLEAR HORIZONTALLY SHALL BE MAINTAINED BETWEEN WATER MAINS AND SANITARY SEWER MAINS AND/OR STORM DRAINS. WHENEVER CONDITIONS PREVENT A LATERAL SEPARATION OF 10 FEET TO A WATER MAIN, THE WATER MAIN SHALL BE LAID IN A SEPARATE TRENCH AND THE DIFFERENCE IN ELEVATION BETWEEN THE WATER MAIN AND THE SEWER MAIN SHALL BE AT LEAST 18 INCHES.
2. IN THE CASE THAT WATER MAINS CROSS SANITARY SEWER MAINS AND ARE SEPARATED BY LESS THAN 18" OF VERTICAL CLEARANCE, THE SEWER MAIN SHALL BE ENCASED IN CONCRETE FOR THE ENTIRE WIDTH OF THE TRENCH AND FOR A DISTANCE OF 8 LINEAR FEET CENTERED ON THE CROSSING.
3. THE CONTRACTOR SHALL REFER TO ARCHITECTS PLANS AND SPECIFICATIONS FOR ACTUAL LOCATION OF ALL ROOF DRAIN LATERALS AND UTILITY ENTRANCES TO INCLUDE SANITARY SEWER LATERALS, DOMESTIC AND FIRE PROTECTION WATER SERVICE, ELECTRIC, TELEPHONE, AND GAS SERVICE. THE CONTRACTOR SHALL COORDINATE INSTALLATION OF UTILITIES IN SUCH A MANNER AS TO AVOID CONFLICTS AND COORDINATE WITH THE PROPER AGENCY THE LOCATION AND SCHEDULING OF CONNECTIONS WITH THEIR FACILITIES.
4. WHERE AN EXISTING UTILITY IS FOUND TO CONFLICT WITH THE PROPOSED WORK, THE LOCATION, ELEVATION AND SIZE OF THE UTILITY SHALL BE ACCURATELY DETERMINED WITHOUT DELAY BY THE CONTRACTOR, AND THE INFORMATION FURNISHED TO THE ENGINEER FOR RESOLUTION. THE ENGINEER WILL THEN PROVIDE RESOLUTION TO UTILITY CONFLICTS WITHOUT DELAY.
5. ALL CONSTRUCTION SHALL CONFORM TO THE APPLICABLE REGULATIONS AND STANDARDS INCLUDING THE CITY OF CRANSTON, RIDOT, RIDEP, MUTCD, AND AASHTO.
6. THE CONTRACTOR IS RESPONSIBLE FOR THE MEANS AND METHODS OF CONSTRUCTION AND FOR CONDITIONS OF THE SITE. THESE PLANS PREPARED BY ALLEN & MAJOR ASSOCIATES, INC., DO NOT EXTEND TO, NOR INCLUDE SYSTEMS PERTAINING TO THE SAFETY OF THE CONSTRUCTION CONTRACTOR OR THE EMPLOYEES, AGENTS OF REPRESENTATIVES IN PERFORMANCE OF THE WORK. THE SEAL OF THE ARCHITECT OR ENGINEER HEREON DOES NOT EXTEND TO ANY SUCH SAFETY SYSTEMS THAT MAY NOW OR HEREAFTER BE INCORPORATED INTO THESE PLANS. THE CONSTRUCTION CONTRACTOR SHALL PREPARE OR OBTAIN THE APPROPRIATE SAFETY SYSTEMS THAT MAY BE REQUIRED BY THE US OCCUPATIONAL SAFETY AND HEALTH ADMINISTRATION (OSHA) AND/OR LOCAL REGULATIONS.
7. PIPE DIMENSIONS ARE MEASURED FROM THE INSIDE FACE OF THE STRUCTURE.
8. CONTRACTOR IS RESPONSIBLE FOR DEMOLITION OF EXISTING STRUCTURES INCLUDING REMOVAL OF ANY EXISTING UTILITIES SERVING THE STRUCTURE. UTILITIES ARE TO BE REMOVED TO THE RIGHT-OF-WAY.
9. LOCATION OF PROPOSED ELECTRICAL/COMMUNICATION SERVICE IS SCHEMATIC IN NATURE AND FOR COORDINATION PURPOSES ONLY. SPECIFIC ALIGNMENTS ARE TO BE DESIGNED BY OTHERS AND REVIEWED BY THE UTILITY PROVIDING SERVICE. PROPOSED ELECTRICAL SERVICE TO BE BURIED IN ACCORDANCE WITH THE CITY OF CRANSTON REGULATIONS AND ELECTRIC COMPANY.
10. LOCATION OF PROPOSED GAS MAIN IS SCHEMATIC IN NATURE AND FOR COORDINATION PURPOSES ONLY. SPECIFIC ALIGNMENTS ARE TO BE DESIGNED BY OTHERS AND REVIEWED BY THE UTILITY PROVIDING SERVICE. THIS WORK TO BE INCLUDED AS PART OF BASE BID FOR SITE WORK.
11. IT IS THE RESPONSIBILITY OF THE CONTRACTOR TO REVIEW ALL DRAWINGS AND SPECIFICATIONS ASSOCIATED WITH THE PROJECT WORK SCOPE PRIOR TO THE START OF CONSTRUCTION. SHOULD THE CONTRACTOR FIND A CONFLICT WITH THE DRAWINGS, SPECIFICATIONS, OR RELATIVE CODES, IT IS THE RESPONSIBILITY OF THE CONTRACTOR TO NOTIFY THE ENGINEER AND/OR ARCHITECT PRIOR TO START OF CONSTRUCTION. FAILURE BY THE CONTRACTOR TO NOTIFY THE ENGINEER AND/OR ARCHITECT SHALL CONSTITUTE ACCEPTANCE OF FULL RESPONSIBILITY BY THE CONTRACTOR TO COMPLETE THE SCOPE OF WORK AND/OR DESIGN INTENT OF THE DRAWINGS AND IN FULL COMPLIANCE WITH LOCAL REGULATIONS AND CODES.
12. THE DESIGN ENGINEER WAIVES ANY AND ALL RESPONSIBILITY AND LIABILITY FOR PROBLEMS WHICH ARISE FROM FAILURE TO FOLLOW THESE PLANS, SPECIFICATIONS, AND/OR THE DESIGN INTENT THEY CONVEY, OR FOR PROBLEMS WHICH ARISE FROM OTHERS' FAILURE TO OBTAIN AND/OR FOLLOW THE GUIDANCE OF THE DESIGN ENGINEER WITH RESPECT TO ANY ERRORS, OMISSIONS, INCONSISTENCIES, AMBIGUITIES, OR CONFLICTS WHICH ARE DISCOVERED OR ALLEGED.

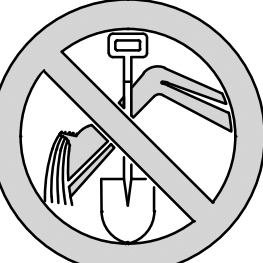


LEGEND

SEWER MANHOLE	
SEWER CLEANOUT	
SEWER VENT	
SEWER LINE	
SEWER FORCEMAIN	
WATER LINE	
WATER (FIRE SERVICE)	
WATER VALVE	
HYDRANT	
WATER LINE REDUCER	
GAS LINE	
GAS VALVE	
OVER HEAD WIRE	
UTILITY POLE	
ELECTRIC MANHOLE/SPICE BOX	
SWITCHING STATION	
HAND HOLE	
ELECTRICAL CONDUIT	
TELE/CABLE CONDUIT	



DIG SAFE



BEFORE YOU DIG  
CALL 811 OR  
1-888-DIG-SAFE  
1-888-344-7233



*Brian D. Jones*  
01-25-23

PROFESSIONAL ENGINEER FOR  
ALLEN & MAJOR ASSOCIATES, INC.

REV	DATE	DESCRIPTION
-----	------	-------------

APPLICANT/OWNER:

CPW TRUE STORAGE LLC  
670 N. COMMERCIAL STREET, SUITE 303  
MANCHESTER, NH 03101

PROJECT:

**SITE REDEVELOPMENT**  
ASSESSORS MAP 8, LOTS 195, 1617 & 2711  
1381 CRANSTON STREET - CRANSTON, RI

PROJECT NO.	2038-08	DATE:	01-25-2023
-------------	---------	-------	------------

SCALE:	1" = 80'	DWG.:C-2038-08_UTILITIES
--------	----------	--------------------------

DESIGNED BY:	JRG	CHECKED BY:	MAM
--------------	-----	-------------	-----

PREPARED BY:

**ALLEN & MAJOR ASSOCIATES, INC.**  
civil engineering • land surveying  
environmental consulting • landscape architecture  
www.allenmajor.com  
100 COMMERCE WAY, SUITE 5  
WOBURN MA 01801  
TEL: (781) 935-6889  
FAX: (781) 935-2896

WOBURN, MA • LAKEVILLE, MA • MANCHESTER, NH

THIS DRAWING HAS BEEN PREPARED IN DIGITAL FORMAT. CLIENT/CLIENTS REPRESENTATIVE OR CONSULTANTS MAY BE PROVIDED COPIES OF DRAWINGS AND SPECIFICATIONS FOR HIS/HER INFORMATION AND/OR SPECIFIC USE ON THIS PROJECT. DUE TO THE POTENTIAL THAT THE PROVIDED INFORMATION MAY BE MODIFIED UNINTENTIONALLY OR OTHERWISE, ALLEN & MAJOR ASSOCIATES, INC. MAY REMOVE ALL INDICATION OF THE DOCUMENT'S AUTHORSHIP ON THE DIGITAL MEDIA. PRINTED REPRESENTATIONS OR PORTABLE DOCUMENT FORMAT OF THE DRAWINGS AND SPECIFICATIONS ISSUED SHALL BE THE ONLY RECORD COPIES OF ALLEN & MAJOR ASSOCIATES, INC.'S WORK PRODUCT.

DRAWING TITLE:

UTILITIES PLAN

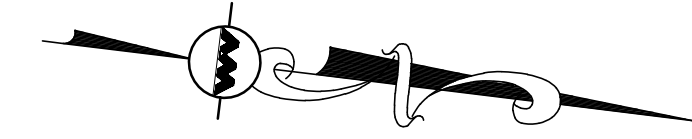
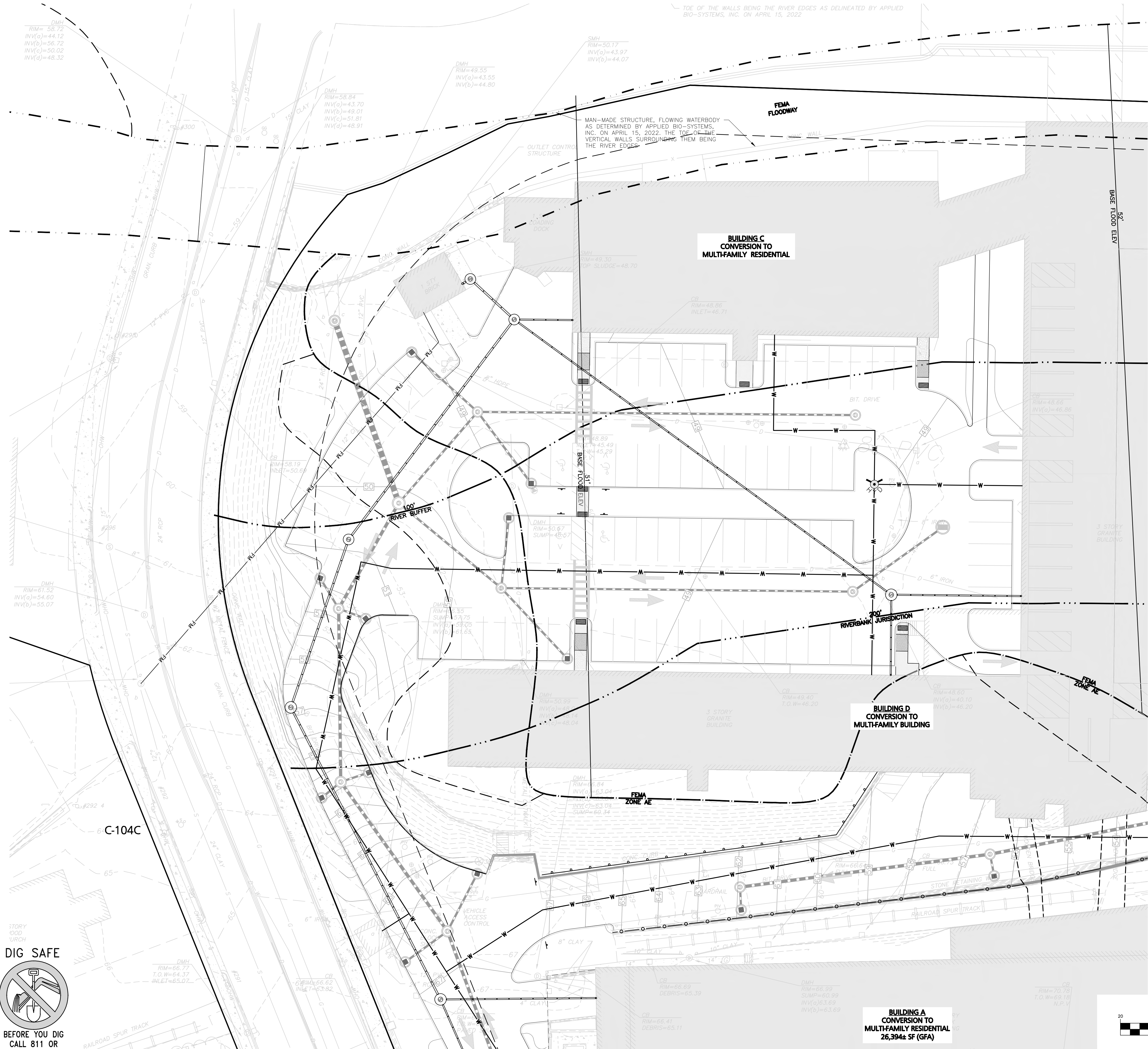
SHEET No.

C-104

Copyright ©2022 Allen & Major Associates, Inc.  
All Rights Reserved



R:\PROJECTS\2038-08\CIVIL DRAWINGS\CURRENT\C-2038-08\_UTILITIES.DWG



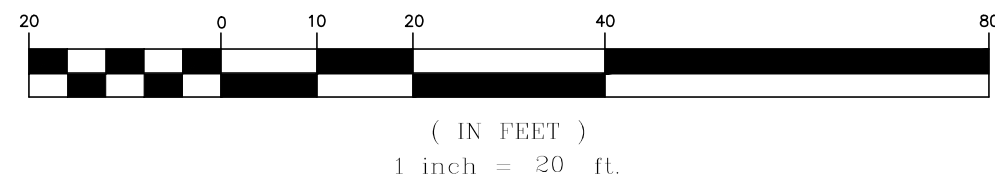
LEGEND

SEWER MANHOLE	⊙
SEWER CLEANOUT	⊙
SEWER VENT	⊙
SEWER LINE	—
SEWER FORCEMAIN	—FM—
WATER LINE	—W—
WATER (FIRE SERVICE)	—W-F—
WATER VALVE	WV
HYDRANT	⊙
WATER LINE REDUCER	▶
GAS LINE	—GAS—
GAS VALVE	GV
OVER HEAD WIRE	—OHW—
UTILITY POLE	⊙
ELECTRIC MANHOLE/SPLICE BOX	⊙
SWITCHING STATION	⊙
HAND HOLE	⊙
ELECTRICAL CONDUIT	—E—
TELE/CABLE CONDUIT	—T-C—

GENERAL NOTES:

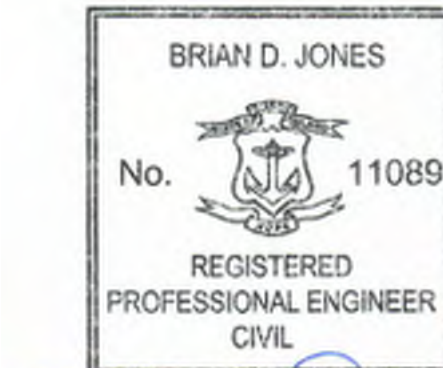
- REFER TO SHEET C-103 FOR ADDITIONAL COMPLIANCE INFORMATION.
- ALL CONSTRUCTION SHALL CONFORM TO THE APPLICABLE REGULATIONS AND STANDARDS INCLUDING THE TOWN OF CRANSTON, RIDOT, IDEP, MUTCD, AND AASHTO.
- THE CONTRACTOR IS SOLELY RESPONSIBLE FOR THE MEANS AND METHODS OF CONSTRUCTION AND FOR CONDITIONS AT THE SITE. THESE PLANS, PREPARED BY ALLEN & MAJOR ASSOCIATES, DO NOT EXTEND TO OR INCLUDE SYSTEMS PERTAINING TO THE SAFETY OF THE CONSTRUCTION CONTRACTOR OR THEIR EMPLOYEES, AGENTS OR REPRESENTATIVES IN THE PERFORMANCE OF THE WORK, OR THE OWNER'S EMPLOYEES, CUSTOMERS, OR THE GENERAL PUBLIC. THE SEAL OF THE ENGINEER AS INCLUDED IN THE PLAN SET DOES NOT EXTEND TO ANY SUCH SAFETY SYSTEMS THAT MAY NOW OR HEREAFTER BE INCORPORATED INTO THESE PLANS. THE CONSTRUCTION CONTRACTOR SHALL PROVIDE THE APPROPRIATE SAFETY SYSTEMS WHICH MAY BE REQUIRED BY THE.
- ALL ELEVATIONS REFER TO NAVD 88.
- THE CONTRACTOR SHALL ADHERE TO ALL TERMS & CONDITIONS AS OUTLINED IN THE GENERAL N.P.D.E.S. PERMIT FOR STORMWATER DISCHARGE ASSOCIATED WITH CONSTRUCTION ACTIVITIES.
- IT IS THE RESPONSIBILITY OF THE CONTRACTOR TO REVIEW ALL DRAWINGS AND SPECIFICATIONS ASSOCIATED WITH THE PROJECT WORK SCOPE PRIOR TO THE START OF CONSTRUCTION. SHOULD THE CONTRACTOR FIND A CONFLICT WITH THE DRAWINGS, SPECIFICATIONS, OR RELATIVE CODES, IT IS THE RESPONSIBILITY OF THE CONTRACTOR TO NOTIFY THE ENGINEER AND/OR ARCHITECT PRIOR TO START OF CONSTRUCTION. FAILURE BY THE CONTRACTOR TO NOTIFY THE ENGINEER AND/OR ARCHITECT SHALL CONSTITUTE ACCEPTANCE OF FULL RESPONSIBILITY BY THE CONTRACTOR TO COMPLETE THE SCOPE OF WORK AND/OR DESIGN INTENT OF THE DRAWINGS AND IN FULL COMPLIANCE WITH LOCAL REGULATIONS AND CODES.
- THE DESIGN ENGINEER WAIVES ANY AND ALL RESPONSIBILITY AND LIABILITY FOR PROBLEMS WHICH ARISE FROM FAILURE TO FOLLOW THESE PLANS, SPECIFICATIONS, AND/OR THE DESIGN INTENT THEY CONVEY, OR FOR PROBLEMS WHICH ARISE FROM OTHERS' FAILURE TO OBTAIN AND/OR FOLLOW THE GUIDANCE OF THE DESIGN ENGINEER WITH RESPECT TO ANY ERRORS, OMISSIONS, INCONSISTENCIES, AMBIGUITIES, OR CONFLICTS WHICH ARE DISCOVERED OR ALLEGED.

GRAPHIC SCALE



**DIG SAFE**

BEFORE YOU DIG  
CALL 811 OR  
1-888-DIG-SAFE  
1-888-344-7233



*Brian D. Jones*  
01-25-23

PROFESSIONAL ENGINEER FOR  
ALLEN & MAJOR ASSOCIATES, INC.

REV	DATE	DESCRIPTION
-----	------	-------------

APPLICANT/OWNER:  
**CPW TRUE STORAGE LLC**  
670 N. COMMERCIAL STREET, SUITE 303  
MANCHESTER, NH 03101

PROJECT:  
**SITE REDEVELOPMENT**  
ASSESSORS MAP 8, LOTS 195, 1617 & 2711  
1381 CRANSTON STREET - CRANSTON, RI

PROJECT NO.	2038-08	DATE:	01-25-2023
-------------	---------	-------	------------

SCALE:	1" = 20'	DWG.:C-2038-08_UTILITIES
--------	----------	--------------------------

DESIGNED BY:	JRG	CHECKED BY:	MAM
--------------	-----	-------------	-----

PREPARED BY:

**ALLEN & MAJOR ASSOCIATES, INC.**  
civil engineering • land surveying  
environmental consulting • landscape architecture  
www.allenmajor.com  
100 COMMERCE WAY, SUITE 5  
WOBBURN MA 01801  
TEL: (781) 935-6889  
FAX: (781) 935-2896

WOBBURN, MA • LAKEVILLE, MA • MANCHESTER, NH

THIS DRAWING HAS BEEN PREPARED IN DIGITAL FORMAT. CLIENT/CLIENTS REPRESENTATIVE OR CONSULTANTS MAY BE PROVIDED COPIES OF DRAWINGS AND SPECIFICATIONS FOR HIS/HER INFORMATION AND/OR SPECIFIC USE ON THIS PROJECT. DUE TO THE POTENTIAL THAT THE PROVIDED INFORMATION MAY BE MODIFIED UNINTENTIONALLY OR OTHERWISE, ALLEN & MAJOR ASSOCIATES, INC. MAY REMOVE ALL INDICATION OF THE DOCUMENT'S AUTHORSHIP ON THE DIGITAL MEDIA. PRINTED REPRESENTATIONS OR PORTABLE DOCUMENT FORMAT OF THE DRAWINGS AND SPECIFICATIONS ISSUED SHALL BE THE ONLY RECORD COPIES OF ALLEN & MAJOR ASSOCIATES, INC.'S WORK PRODUCT.

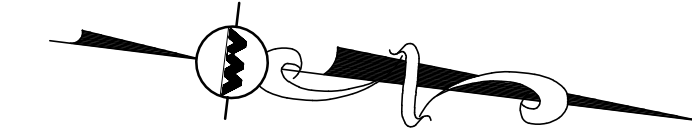
DRAWING TITLE:	SHEET No.
----------------	-----------

**UTILITIES PLAN**  
**C-104A**

Copyright ©2022 Allen & Major Associates, Inc.  
All Rights Reserved



R:\PROJECTS\2038-08\CIVIL DRAWINGS\CURRENT\C-2038-08\_UTILITIES.DWG



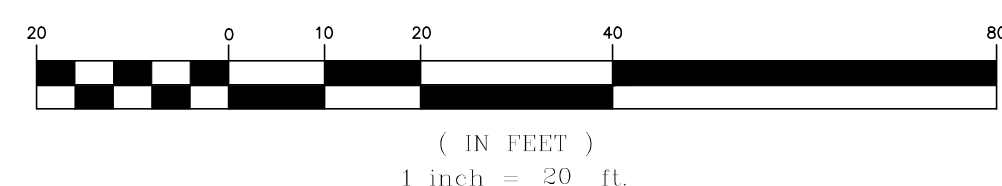
LEGEND

SEWER MANHOLE	⊙
SEWER CLEANOUT	⊙
SEWER VENT	⊙
SEWER LINE	—
SEWER FORCEMAIN	— FM —
WATER LINE	— W —
WATER (FIRE SERVICE)	— W-F —
WATER VALVE	WV
HYDRANT	⊙
WATER LINE REDUCER	▶
GAS LINE	— GAS —
GAS VALVE	GV
OVER HEAD WIRE	— OHW —
UTILITY POLE	⊙
ELECTRIC MANHOLE/SPLICE BOX	⊙
SWITCHING STATION	⊙
HAND HOLE	⊙
ELECTRICAL CONDUIT	— E —
TELE/CABLE CONDUIT	— T-C —

GENERAL NOTES:

1. REFER TO SHEET C-103 FOR ADDITIONAL COMPLIANCE INFORMATION.
2. ALL CONSTRUCTION SHALL CONFORM TO THE APPLICABLE REGULATIONS AND STANDARDS INCLUDING THE TOWN OF CRANSTON, RIDOT, RIDEP, MUTCD, AND AASHTO.
3. THE CONTRACTOR IS SOLELY RESPONSIBLE FOR THE MEANS AND METHODS OF CONSTRUCTION AND FOR CONDITIONS AT THE SITE. THESE PLANS, PREPARED BY ALLEN & MAJOR ASSOCIATES, DO NOT EXTEND TO OR INCLUDE SYSTEMS PERTAINING TO THE SAFETY OF THE CONSTRUCTION CONTRACTOR OR THEIR EMPLOYEES, AGENTS OR REPRESENTATIVES IN THE PERFORMANCE OF THE WORK, OR THE OWNER'S EMPLOYEES, CUSTOMERS, OR THE GENERAL PUBLIC. THE SEAL OF THE ENGINEER AS INCLUDED IN THE PLAN SET DOES NOT EXTEND TO ANY SUCH SAFETY SYSTEMS THAT MAY NOW OR HEREAFTER BE INCORPORATED INTO THESE PLANS. THE CONSTRUCTION CONTRACTOR SHALL PROVIDE THE APPROPRIATE SAFETY SYSTEMS WHICH MAY BE REQUIRED BY THE
4. ALL ELEVATIONS REFER TO NAVD 88.
5. THE CONTRACTOR SHALL ADHERE TO ALL TERMS & CONDITIONS AS OUTLINED IN THE GENERAL N.P.D.E.S. PERMIT FOR STORMWATER DISCHARGE ASSOCIATED WITH CONSTRUCTION ACTIVITIES.
6. IT IS THE RESPONSIBILITY OF THE CONTRACTOR TO REVIEW ALL DRAWINGS AND SPECIFICATIONS ASSOCIATED WITH THE PROJECT WORK SCOPE PRIOR TO THE START OF CONSTRUCTION. SHOULD THE CONTRACTOR FIND A CONFLICT WITH THE DRAWINGS, SPECIFICATIONS, OR RELATIVE CODES, IT IS THE RESPONSIBILITY OF THE CONTRACTOR TO NOTIFY THE ENGINEER AND/OR ARCHITECT PRIOR TO START OF CONSTRUCTION. FAILURE BY THE CONTRACTOR TO NOTIFY THE ENGINEER AND/OR ARCHITECT SHALL CONSTITUTE ACCEPTANCE OF FULL RESPONSIBILITY BY THE CONTRACTOR TO COMPLETE THE SCOPE OF WORK AND/OR DESIGN INTENT OF THE DRAWINGS AND IN FULL COMPLIANCE WITH LOCAL REGULATIONS AND CODES.
7. THE DESIGN ENGINEER WAIVES ANY AND ALL RESPONSIBILITY AND LIABILITY FOR PROBLEMS WHICH ARISE FROM FAILURE TO FOLLOW THESE PLANS, SPECIFICATIONS, AND/OR THE DESIGN INTENT THEY CONVEY, OR FOR PROBLEMS WHICH ARISE FROM OTHERS' FAILURE TO OBTAIN AND/OR FOLLOW THE GUIDANCE OF THE DESIGN ENGINEER WITH RESPECT TO ANY ERRORS, OMISSIONS, INCONSISTENCIES, AMBIGUITIES, OR CONFLICTS WHICH ARE DISCOVERED OR ALLEGED.

GRAPHIC SCALE



DIG SAFE

BEFORE YOU DIG  
CALL 811 OR  
1-888-DIG-SAFE  
1-888-344-7233



*Brian D. Jones*  
01-25-23

PROFESSIONAL ENGINEER FOR  
ALLEN & MAJOR ASSOCIATES, INC.

REV	DATE	DESCRIPTION
-----	------	-------------

APPLICANT/OWNER:  
**CPW TRUE STORAGE LLC**  
670 N. COMMERCIAL STREET, SUITE 303  
MANCHESTER, NH 03101

PROJECT:  
**SITE REDEVELOPMENT**  
ASSESSORS MAP 8, LOTS 195, 1617 & 2711  
1381 CRANSTON STREET - CRANSTON, RI

PROJECT NO.	2038-08	DATE:	01-25-2023
SCALE:	1" = 20'	DWG.:	C-2038-08_UTILITIES
DESIGNED BY:	JRG	CHECKED BY:	MAM

PREPARED BY:

**ALLEN & MAJOR ASSOCIATES, INC.**  
civil engineering • land surveying  
environmental consulting • landscape architecture  
www.allenmajor.com  
100 COMMERCE WAY, SUITE 5  
WOBBURN MA 01801  
TEL: (781) 935-6889  
FAX: (781) 935-2896

WOBBURN, MA • LAKEVILLE, MA • MANCHESTER, NH

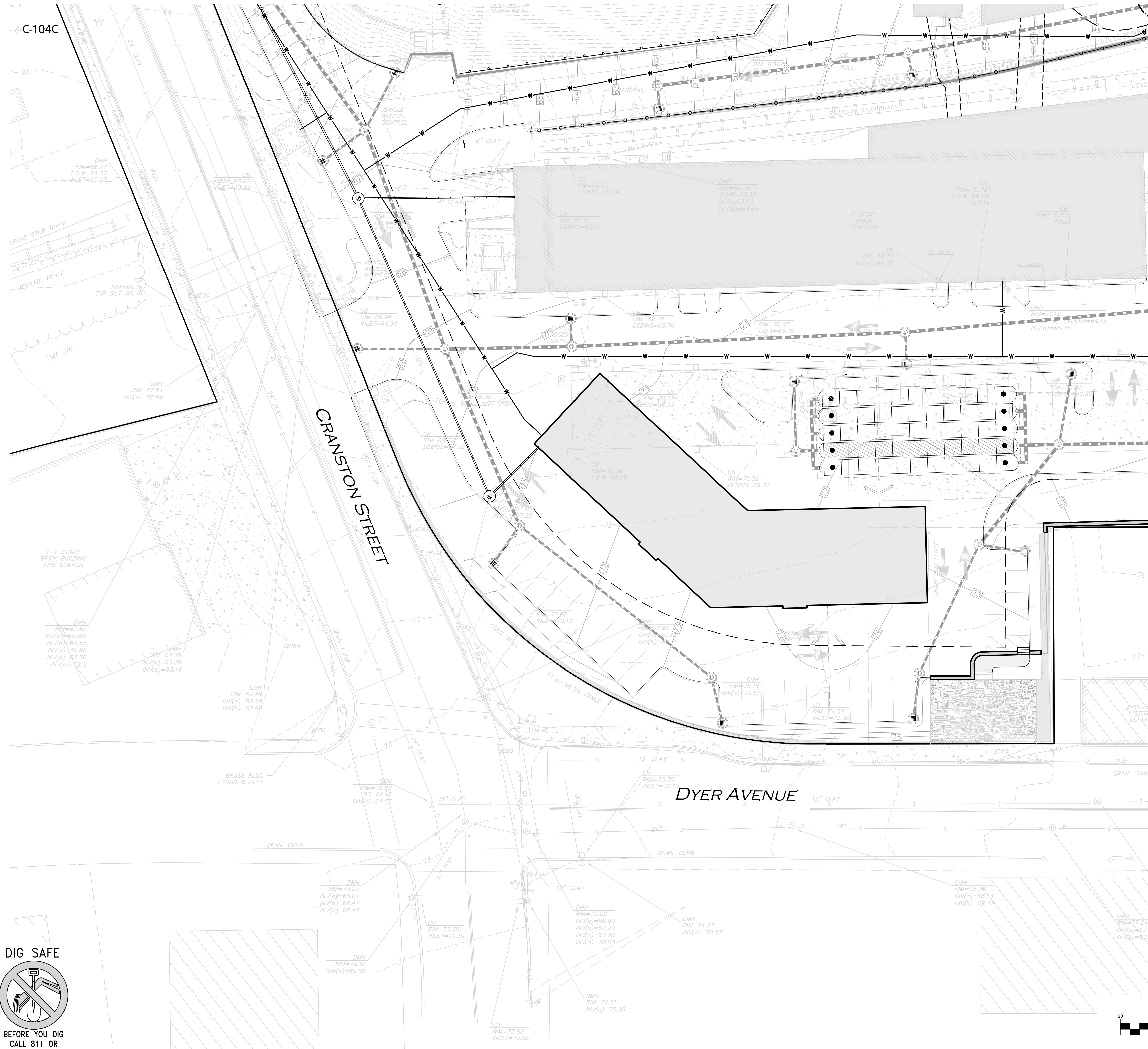
THIS DRAWING HAS BEEN PREPARED IN DIGITAL FORMAT. CLIENT/CLIENTS REPRESENTATIVE OR CONSULTANTS MAY BE PROVIDED COPIES OF DRAWINGS AND SPECIFICATIONS FOR HIS/HER INFORMATION AND/OR SPECIFIC USE ON THIS PROJECT. DUE TO THE POTENTIAL THAT THE PROVIDED INFORMATION MAY BE MODIFIED UNINTENTIONALLY OR OTHERWISE, ALLEN & MAJOR ASSOCIATES, INC. MAY REMOVE ALL INDICATION OF THE DOCUMENT'S AUTHORSHIP ON THE DIGITAL MEDIA. PRINTED REPRESENTATIONS OR PORTABLE DOCUMENT FORMAT OF THE DRAWINGS AND SPECIFICATIONS ISSUED SHALL BE THE ONLY RECORD COPIES OF ALLEN & MAJOR ASSOCIATES, INC.'S WORK PRODUCT.

DRAWING TITLE:	SHEET No.
UTILITIES PLAN	C-104B

Copyright ©2022 Allen & Major Associates, Inc.  
All Rights Reserved



R:\PROJECTS\2038-08\CIVIL DRAWINGS\CURRENT\C-2038-08\_UTILITIES.DWG



**LEGEND**

SEWER MANHOLE

SEWER CLEANOUT

SEWER VENT

SEWER LINE

SEWER FORCEMAIN

WATER LINE

WATER (FIRE SERVICE)

WATER VALVE

HYDRANT

WATER LINE REDUCER

GAS LINE

GAS VALVE

OVER HEAD WIRE

UTILITY POLE

ELECTRIC MANHOLE/SPLICE BOX

SWITCHING STATION

HAND HOLE

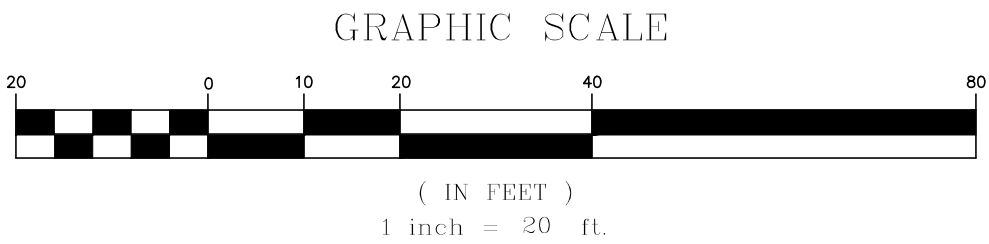
ELECTRICAL CONDUIT

TELE/CABLE CONDUIT

- GENERAL NOTES:**
- REFER TO SHEET C-103 FOR ADDITIONAL COMPLIANCE INFORMATION.
  - ALL CONSTRUCTION SHALL CONFORM TO THE APPLICABLE REGULATIONS AND STANDARDS INCLUDING THE TOWN OF CRANSTON, RIDOT, IDEP, MUTCD, AND AASHTO.
  - THE CONTRACTOR IS SOLELY RESPONSIBLE FOR THE MEANS AND METHODS OF CONSTRUCTION AND FOR CONDITIONS AT THE SITE. THESE PLANS, PREPARED BY ALLEN & MAJOR ASSOCIATES, DO NOT EXTEND TO OR INCLUDE SYSTEMS PERTAINING TO THE SAFETY OF THE CONSTRUCTION CONTRACTOR OR THEIR EMPLOYEES, AGENTS OR REPRESENTATIVES IN THE PERFORMANCE OF THE WORK, OR THE OWNER'S EMPLOYEES, CUSTOMERS, OR THE GENERAL PUBLIC. THE SEAL OF THE ENGINEER AS INCLUDED IN THE PLAN SET DOES NOT EXTEND TO ANY SUCH SAFETY SYSTEMS THAT MAY NOW OR HEREAFTER BE INCORPORATED INTO THESE PLANS. THE CONSTRUCTION CONTRACTOR SHALL PROVIDE THE APPROPRIATE SAFETY SYSTEMS WHICH MAY BE REQUIRED BY THE.
  - ALL ELEVATIONS REFER TO NAVD 88.
  - THE CONTRACTOR SHALL ADHERE TO ALL TERMS & CONDITIONS AS OUTLINED IN THE GENERAL N.P.D.E.S. PERMIT FOR STORMWATER DISCHARGE ASSOCIATED WITH CONSTRUCTION ACTIVITIES.
  - IT IS THE RESPONSIBILITY OF THE CONTRACTOR TO REVIEW ALL DRAWINGS AND SPECIFICATIONS ASSOCIATED WITH THE PROJECT WORK SCOPE PRIOR TO THE START OF CONSTRUCTION. SHOULD THE CONTRACTOR FIND A CONFLICT WITH THE DRAWINGS, SPECIFICATIONS, OR RELATIVE CODES, IT IS THE RESPONSIBILITY OF THE CONTRACTOR TO NOTIFY THE ENGINEER AND/OR ARCHITECT PRIOR TO START OF CONSTRUCTION. FAILURE BY THE CONTRACTOR TO NOTIFY THE ENGINEER AND/OR ARCHITECT SHALL CONSTITUTE ACCEPTANCE OF FULL RESPONSIBILITY BY THE CONTRACTOR TO COMPLETE THE SCOPE OF WORK AND/OR DESIGN INTENT OF THE DRAWINGS AND IN FULL COMPLIANCE WITH LOCAL REGULATIONS AND CODES.
  - THE DESIGN ENGINEER WAIVES ANY AND ALL RESPONSIBILITY AND LIABILITY FOR PROBLEMS WHICH ARISE FROM FAILURE TO FOLLOW THESE PLANS, SPECIFICATIONS, AND/OR THE DESIGN INTENT THEY CONVEY, OR FOR PROBLEMS WHICH ARISE FROM OTHERS' FAILURE TO OBTAIN AND/OR FOLLOW THE GUIDANCE OF THE DESIGN ENGINEER WITH RESPECT TO ANY ERRORS, OMISSIONS, INCONSISTENCIES, AMBIGUITIES, OR CONFLICTS WHICH ARE DISCOVERED OR ALLEGED.

**DIG SAFE**

BEFORE YOU DIG  
CALL 811 OR  
1-888-DIG-SAFE  
1-888-344-7233



*Brian D. Jones*  
01-25-23

PROFESSIONAL ENGINEER FOR  
ALLEN & MAJOR ASSOCIATES, INC.

CPW TRUE STORAGE LLC  
670 N. COMMERCIAL STREET, SUITE 303  
MANCHESTER, NH 03101

**PROJECT:**  
**SITE REDEVELOPMENT**  
ASSESSORS MAP 8, LOTS 195, 1617 & 2711  
1381 CRANSTON STREET - CRANSTON, RI

PROJECT NO. 2038-08 DATE: 01-25-2023

SCALE: 1" = 20' DWG.: C-2038-08\_UTILITIES

DESIGNED BY: JRG CHECKED BY: MAM

PREPARED BY:

**ALLEN & MAJOR ASSOCIATES, INC.**  
civil engineering • land surveying  
environmental consulting • landscape architecture  
www.allenmajor.com  
100 COMMERCE WAY, SUITE 5  
WOBBURN MA 01801  
TEL: (781) 935-6889  
FAX: (781) 935-2896

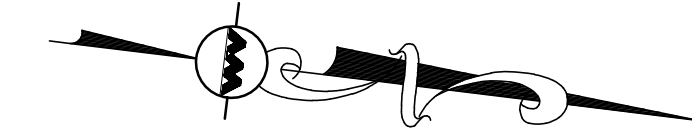
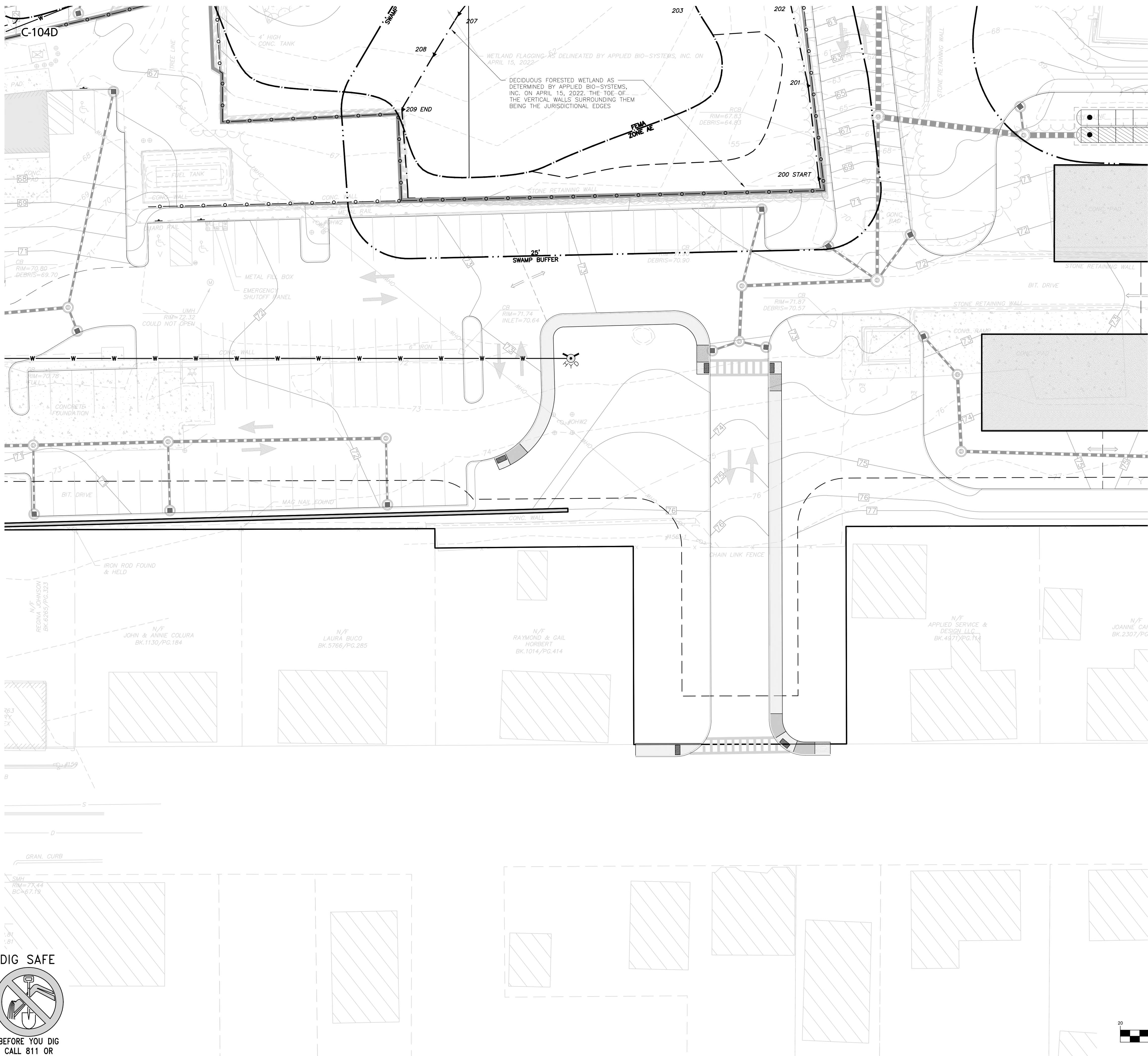
WOBBURN, MA • LAKEVILLE, MA • MANCHESTER, NH

THIS DRAWING HAS BEEN PREPARED IN DIGITAL FORMAT. CLIENT/Clients' REPRESENTATIVE OR CONSULTANTS MAY BE PROVIDED COPIES OF DRAWINGS AND SPECIFICATIONS FOR HIS/HER INFORMATION AND/OR SPECIFIC USE ON THIS PROJECT. DUE TO THE POTENTIAL THAT THE PROVIDED INFORMATION MAY BE MODIFIED UNINTENTIONALLY OR OTHERWISE, ALLEN & MAJOR ASSOCIATES, INC. MAY REMOVE ALL INDICATION OF THE DOCUMENT'S AUTHORSHIP ON THE DIGITAL MEDIA. PRINTED REPRESENTATIONS OR PORTABLE DOCUMENT FORMAT OF THE DRAWINGS AND SPECIFICATIONS ISSUED SHALL BE THE ONLY RECORD COPIES OF ALLEN & MAJOR ASSOCIATES, INC.'S WORK PRODUCT.

DRAWING TITLE: UTILITIES PLAN SHEET No. C-104C

Copyright ©2022 Allen & Major Associates, Inc.  
All Rights Reserved





LEGEND

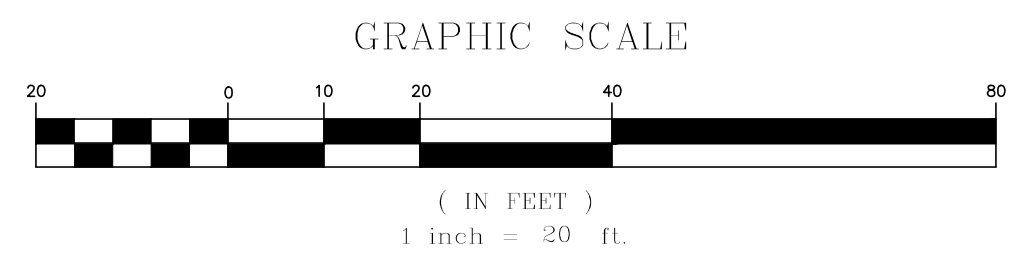
- SEWER MANHOLE
- SEWER CLEANOUT
- SEWER VENT
- SEWER LINE
- SEWER FORCEMAIN
- WATER LINE
- WATER (FIRE SERVICE)
- WATER VALVE
- HYDRANT
- WATER LINE REDUCER
- GAS LINE
- GAS VALVE
- OVER HEAD WIRE
- UTILITY POLE
- ELECTRIC MANHOLE/SPLICE BOX
- SWITCHING STATION
- HAND HOLE
- ELECTRICAL CONDUIT
- TELE/CABLE CONDUIT

GENERAL NOTES:

- REFER TO SHEET C-103 FOR ADDITIONAL COMPLIANCE INFORMATION.
- ALL CONSTRUCTION SHALL CONFORM TO THE APPLICABLE REGULATIONS AND STANDARDS INCLUDING THE TOWN OF CRANSTON, RIDOT, RIDEP, MUTCD, AND AASHTO.
- THE CONTRACTOR IS SOLELY RESPONSIBLE FOR THE MEANS AND METHODS OF CONSTRUCTION AND FOR CONDITIONS AT THE SITE. THESE PLANS, PREPARED BY ALLEN & MAJOR ASSOCIATES, DO NOT EXTEND TO OR INCLUDE SYSTEMS PERTAINING TO THE SAFETY OF THE CONSTRUCTION CONTRACTOR OR THEIR EMPLOYEES, AGENTS OR REPRESENTATIVES IN THE PERFORMANCE OF THE WORK, OR THE OWNER'S EMPLOYEES, CUSTOMERS, OR THE GENERAL PUBLIC. THE SEAL OF THE ENGINEER AS INCLUDED IN THE PLAN SET DOES NOT EXTEND TO ANY SUCH SAFETY SYSTEMS THAT MAY NOW OR HEREAFTER BE INCORPORATED INTO THESE PLANS. THE CONSTRUCTION CONTRACTOR SHALL PROVIDE THE APPROPRIATE SAFETY SYSTEMS WHICH MAY BE REQUIRED BY THE.
- ALL ELEVATIONS REFER TO NAVD 88.
- THE CONTRACTOR SHALL ADHERE TO ALL TERMS & CONDITIONS AS OUTLINED IN THE GENERAL N.P.D.E.S. PERMIT FOR STORMWATER DISCHARGE ASSOCIATED WITH CONSTRUCTION ACTIVITIES.
- IT IS THE RESPONSIBILITY OF THE CONTRACTOR TO REVIEW ALL DRAWINGS AND SPECIFICATIONS ASSOCIATED WITH THE PROJECT WORK SCOPE PRIOR TO THE START OF CONSTRUCTION. SHOULD THE CONTRACTOR FIND A CONFLICT WITH THE DRAWINGS, SPECIFICATIONS, OR RELATIVE CODES, IT IS THE RESPONSIBILITY OF THE CONTRACTOR TO NOTIFY THE ENGINEER AND/OR ARCHITECT PRIOR TO START OF CONSTRUCTION. FAILURE BY THE CONTRACTOR TO NOTIFY THE ENGINEER AND/OR ARCHITECT SHALL CONSTITUTE ACCEPTANCE OF FULL RESPONSIBILITY BY THE CONTRACTOR TO COMPLETE THE SCOPE OF WORK AND/OR DESIGN INTENT OF THE DRAWINGS AND IN FULL COMPLIANCE WITH LOCAL REGULATIONS AND CODES.
- THE DESIGN ENGINEER WAIVES ANY AND ALL RESPONSIBILITY AND LIABILITY FOR PROBLEMS WHICH ARISE FROM FAILURE TO FOLLOW THESE PLANS, SPECIFICATIONS, AND/OR THE DESIGN INTENT THEY CONVEY, OR FOR PROBLEMS WHICH ARISE FROM OTHERS' FAILURE TO OBTAIN AND/OR FOLLOW THE GUIDANCE OF THE DESIGN ENGINEER WITH RESPECT TO ANY ERRORS, OMISSIONS, INCONSISTENCIES, AMBIGUITIES, OR CONFLICTS WHICH ARE DISCOVERED OR ALLEGED.

DIG SAFE

BEFORE YOU DIG  
CALL 811 OR  
1-888-DIG-SAFE  
1-888-344-7233



PROFESSIONAL ENGINEER FOR  
ALLEN & MAJOR ASSOCIATES, INC.

REV	DATE	DESCRIPTION
-----	------	-------------

APPLICANT/OWNER:  
**CPW TRUE STORAGE LLC**  
670 N. COMMERCIAL STREET, SUITE 303  
MANCHESTER, NH 03101

PROJECT:  
**SITE REDEVELOPMENT**  
ASSESSORS MAP 8, LOTS 195, 1617 & 2711  
1381 CRANSTON STREET - CRANSTON, RI

PROJECT NO. 2038-08 DATE: 01-25-2023

SCALE: 1" = 20' DWG.: C-2038-08\_UTILITIES

DESIGNED BY: JRG CHECKED BY: MAM

PREPARED BY:

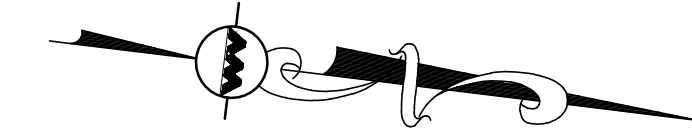
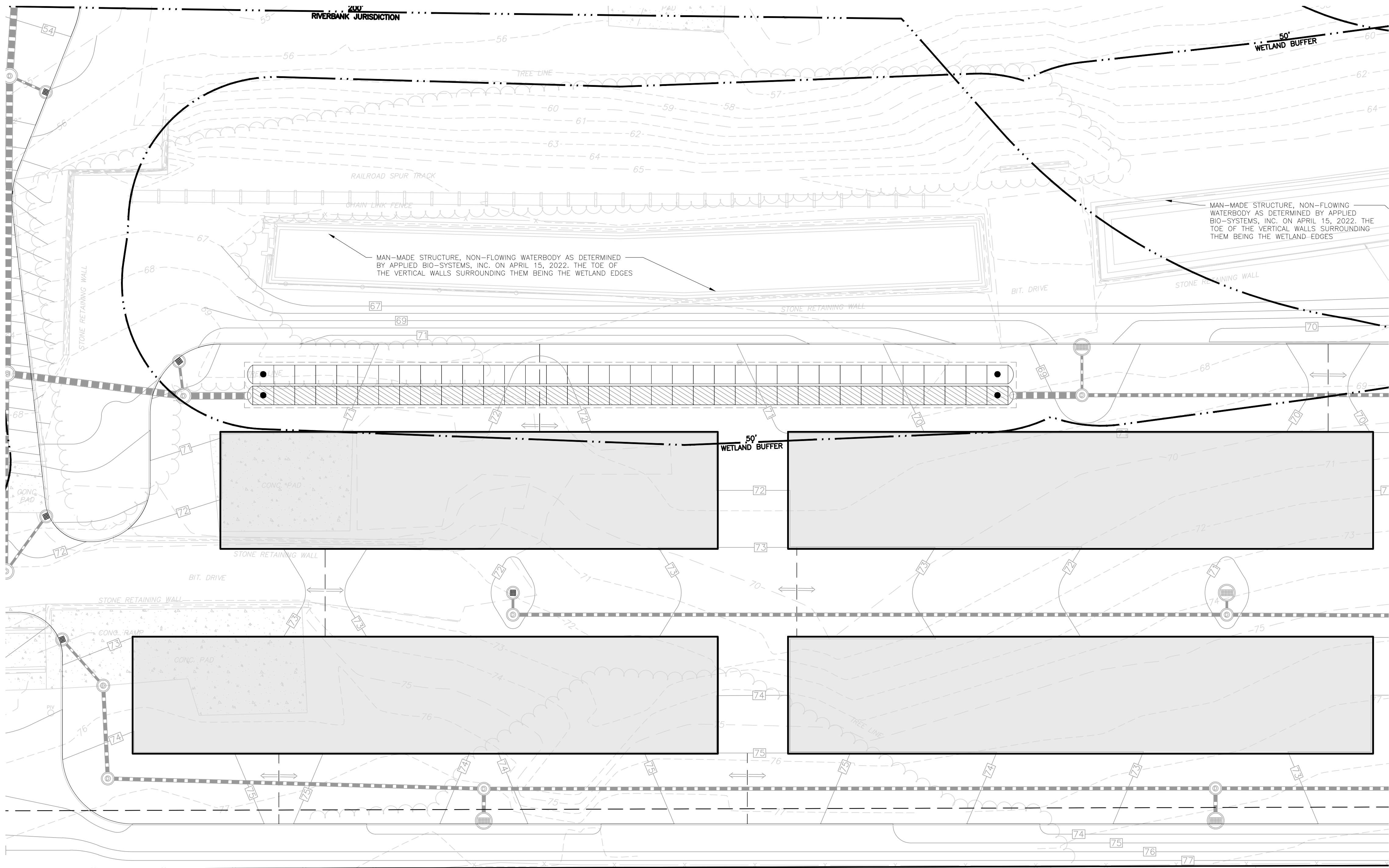
**ALLEN & MAJOR ASSOCIATES, INC.**  
civil engineering • land surveying  
environmental consulting • landscape architecture  
www.allenmajor.com  
100 COMMERCE WAY, SUITE 5  
WOBBURN MA 01801  
TEL: (781) 935-6889  
FAX: (781) 935-2896

WOBBURN, MA • LAKEVILLE, MA • MANCHESTER, NH

THIS DRAWING HAS BEEN PREPARED IN DIGITAL FORMAT. CLIENT/CUSTOMER'S REPRESENTATIVE OR CONSULTANTS MAY BE PROVIDED COPIES OF DRAWINGS AND SPECIFICATIONS FOR HIS/HER INFORMATION AND/OR SPECIFIC USE ON THIS PROJECT. DUE TO THE POTENTIAL THAT THE PROVIDED INFORMATION MAY BE MODIFIED UNINTENTIONALLY OR OTHERWISE, ALLEN & MAJOR ASSOCIATES, INC. MAY REMOVE ALL INDICATION OF THE DOCUMENT'S AUTHORSHIP ON THE DIGITAL MEDIA. PRINTED REPRESENTATIONS OR PORTABLE DOCUMENT FORMAT OF THE DRAWINGS AND SPECIFICATIONS ISSUED SHALL BE THE ONLY RECORD COPIES OF ALLEN & MAJOR ASSOCIATES, INC.'S WORK PRODUCT.

DRAWING TITLE: UTILITIES PLAN SHEET No. C-104D





LEGEND

SEWER MANHOLE	⊙
SEWER CLEANOUT	⊙
SEWER VENT	⊙
SEWER LINE	—
SEWER FORCEMAIN	— FM —
WATER LINE	— W —
WATER (FIRE SERVICE)	— W-F —
WATER VALVE	WV
HYDRANT	⊙
WATER LINE REDUCER	▶
GAS LINE	— GAS —
GAS VALVE	GV
OVER HEAD WIRE	— OHW —
UTILITY POLE	⊙
ELECTRIC MANHOLE/SPLICE BOX	⊙
SWITCHING STATION	⊙
HAND HOLE	⊙
ELECTRICAL CONDUIT	— E —
TELE/CABLE CONDUIT	— T-C —

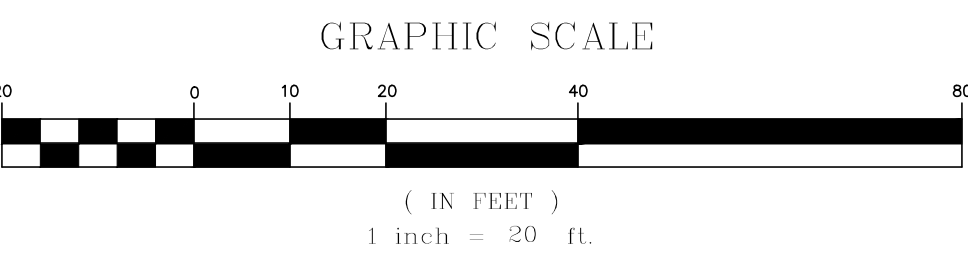
GENERAL NOTES:

1. REFER TO SHEET C-103 FOR ADDITIONAL COMPLIANCE INFORMATION.
2. ALL CONSTRUCTION SHALL CONFORM TO THE APPLICABLE REGULATIONS AND STANDARDS INCLUDING THE TOWN OF CRANSTON, RIDOT, RIDEP, MUTCD, AND AASHTO.
3. THE CONTRACTOR IS SOLELY RESPONSIBLE FOR THE MEANS AND METHODS OF CONSTRUCTION AND FOR CONDITIONS AT THE SITE. THESE PLANS, PREPARED BY ALLEN & MAJOR ASSOCIATES, DO NOT EXTEND TO OR INCLUDE SYSTEMS PERTAINING TO THE SAFETY OF THE CONSTRUCTION CONTRACTOR OR THEIR EMPLOYEES, AGENTS OR REPRESENTATIVES IN THE PERFORMANCE OF THE WORK, OR THE OWNER'S EMPLOYEES, CUSTOMERS, OR THE GENERAL PUBLIC. THE SEAL OF THE ENGINEER AS INCLUDED IN THE PLAN SET DOES NOT EXTEND TO ANY SUCH SAFETY SYSTEMS THAT MAY NOW OR HEREAFTER BE INCORPORATED INTO THESE PLANS. THE CONSTRUCTION CONTRACTOR SHALL PROVIDE THE APPROPRIATE SAFETY SYSTEMS WHICH MAY BE REQUIRED BY THE.
4. ALL ELEVATIONS REFER TO NAVD 88.
5. THE CONTRACTOR SHALL ADHERE TO ALL TERMS & CONDITIONS AS OUTLINED IN THE GENERAL N.P.D.E.S. PERMIT FOR STORMWATER DISCHARGE ASSOCIATED WITH CONSTRUCTION ACTIVITIES.
6. IT IS THE RESPONSIBILITY OF THE CONTRACTOR TO REVIEW ALL DRAWINGS AND SPECIFICATIONS ASSOCIATED WITH THE PROJECT WORK SCOPE PRIOR TO THE START OF CONSTRUCTION. SHOULD THE CONTRACTOR FIND A CONFLICT WITH THE DRAWINGS, SPECIFICATIONS, OR RELATIVE CODES, IT IS THE RESPONSIBILITY OF THE CONTRACTOR TO NOTIFY THE ENGINEER AND/OR ARCHITECT PRIOR TO START OF CONSTRUCTION. FAILURE BY THE CONTRACTOR TO NOTIFY THE ENGINEER AND/OR ARCHITECT SHALL CONSTITUTE ACCEPTANCE OF FULL RESPONSIBILITY BY THE CONTRACTOR TO COMPLETE THE SCOPE OF WORK AND/OR DESIGN INTENT OF THE DRAWINGS AND IN FULL COMPLIANCE WITH LOCAL REGULATIONS AND CODES.
7. THE DESIGN ENGINEER WAIVES ANY AND ALL RESPONSIBILITY AND LIABILITY FOR PROBLEMS WHICH ARISE FROM FAILURE TO FOLLOW THESE PLANS, SPECIFICATIONS, AND/OR THE DESIGN INTENT THEY CONVEY, OR FOR PROBLEMS WHICH ARISE FROM OTHERS' FAILURE TO OBTAIN AND/OR FOLLOW THE GUIDANCE OF THE DESIGN ENGINEER WITH RESPECT TO ANY ERRORS, OMISSIONS, INCONSISTENCIES, AMBIGUITIES, OR CONFLICTS WHICH ARE DISCOVERED OR ALLEGED.

N/F APPLIED SERVICE & DESIGN LLC BK.4870/PG.114	N/F JOANNE CARTER BK.2307/PG.244	N/F RICHARD W. SALISBURY BK.766/PG.738	N/F JOHN & JODI BOUDREAU BK.2111/PG.52	N/F JOHN & JODI BOUDREAU BK.940/PG.777	N/F MARTINEZ-BENVENIDO & CLAROS-FRANCOSCA BK.6031/PG.149	N/F JANEDITH MO. CALDERO BK.606/PG.
--	--	---	--	--	---	--

DIG SAFE

BEFORE YOU DIG  
CALL 811 OR  
1-888-DIG-SAFE  
1-888-344-7233



BRIAN D. JONES  
No. 11089  
REGISTERED  
PROFESSIONAL ENGINEER  
CIVIL

*Brian D. Jones*  
01-25-23

PROFESSIONAL ENGINEER FOR  
ALLEN & MAJOR ASSOCIATES, INC.

REV	DATE	DESCRIPTION
-----	------	-------------

APPLICANT/OWNER:  
**CPW TRUE STORAGE LLC**  
670 N. COMMERCIAL STREET, SUITE 303  
MANCHESTER, NH 03101

PROJECT:  
**SITE REDEVELOPMENT**  
ASSESSORS MAP 8, LOTS 195, 1617 & 2711  
1381 CRANSTON STREET - CRANSTON, RI

PROJECT NO. 2038-08 DATE: 01-25-2023

SCALE: 1" = 20' DWG.:C-2038-08\_UTILITIES

DESIGNED BY: JRG CHECKED BY: MAM

PREPARED BY:

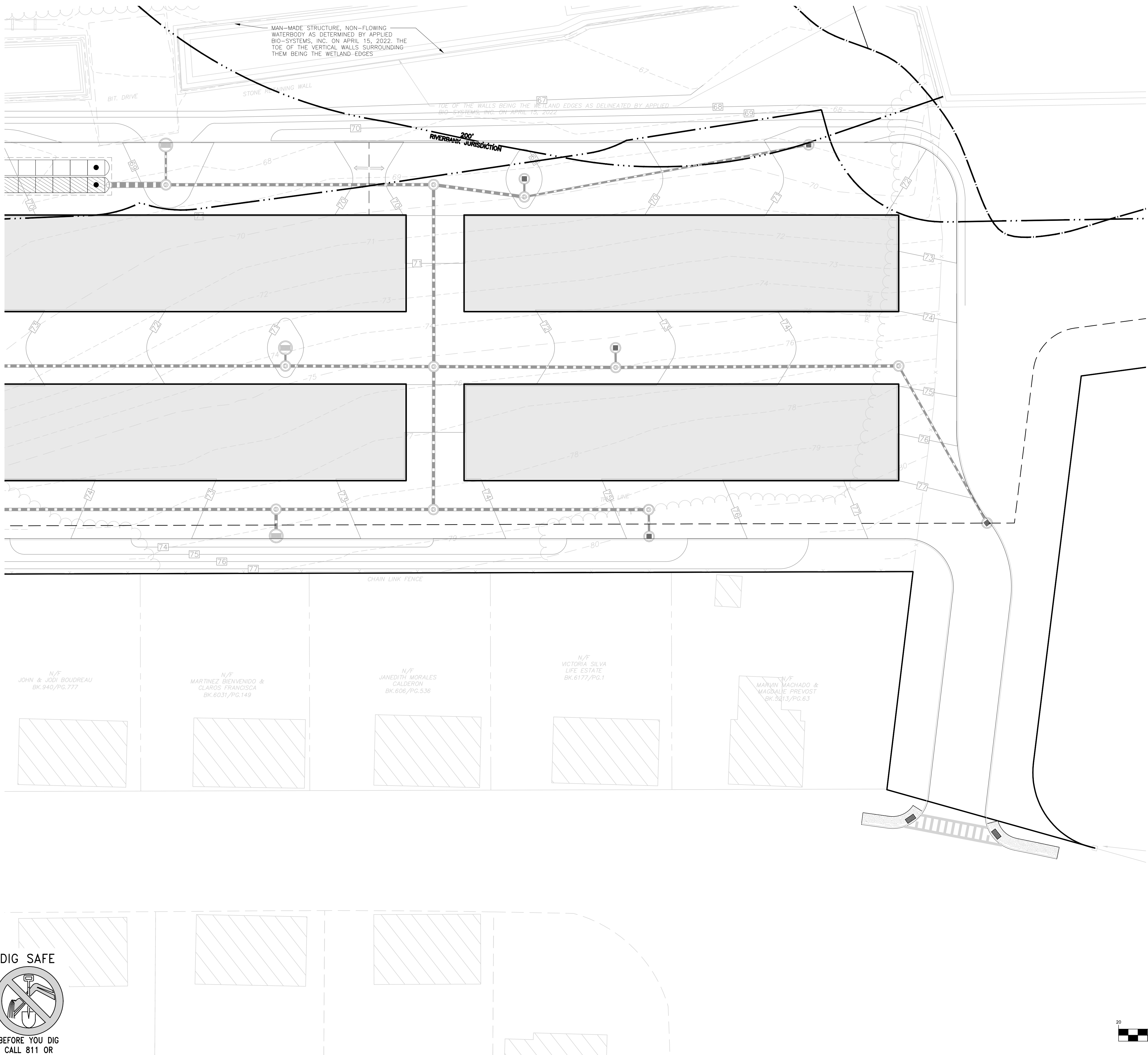
**ALLEN & MAJOR ASSOCIATES, INC.**  
civil engineering • land surveying  
environmental consulting • landscape architecture  
www.allenmajor.com  
100 COMMERCE WAY, SUITE 5  
WOBURN MA 01801  
TEL: (781) 935-6889  
FAX: (781) 935-2896

WOBURN, MA • LAKEVILLE, MA • MANCHESTER, NH

THIS DRAWING HAS BEEN PREPARED IN DIGITAL FORMAT. CLIENT/CUSTOMER'S REPRESENTATIVE OR CONSULTANTS MAY BE PROVIDED COPIES OF DRAWINGS AND SPECIFICATIONS FOR HIS/HER INFORMATION AND/OR SPECIFIC USE ON THIS PROJECT. DUE TO THE POTENTIAL THAT THE PROVIDED INFORMATION MAY BE MODIFIED UNINTENTIONALLY OR OTHERWISE, ALLEN & MAJOR ASSOCIATES, INC. MAY REMOVE ALL INDICATION OF THE DOCUMENT'S AUTHORSHIP ON THE DIGITAL MEDIA. PRINTED REPRESENTATIONS OR PORTABLE DOCUMENT FORMAT OF THE DRAWINGS AND SPECIFICATIONS ISSUED SHALL BE THE ONLY RECORD COPIES OF ALLEN & MAJOR ASSOCIATES, INC.'S WORK PRODUCT.

DRAWING TITLE: UTILITIES PLAN SHEET No. C-104E





**LEGEND**

SEWER MANHOLE

SEWER CLEANOUT

SEWER VENT

SEWER LINE

SEWER FORCEMAIN

WATER LINE

WATER (FIRE SERVICE)

WATER VALVE

HYDRANT

WATER LINE REDUCER

GAS LINE

GAS VALVE

OVER HEAD WIRE

UTILITY POLE

ELECTRIC MANHOLE/SPLICE BOX

SWITCHING STATION

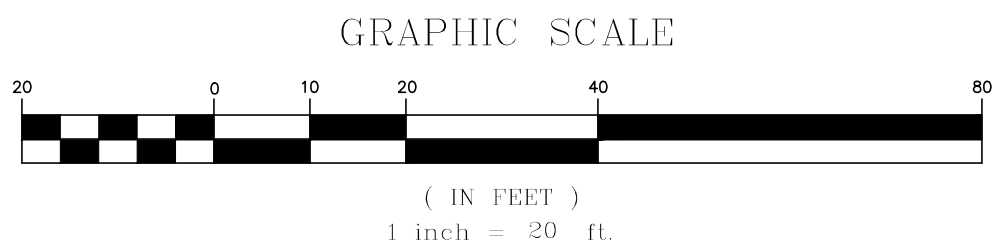
HAND HOLE

ELECTRICAL CONDUIT

TELE/CABLE CONDUIT

**GENERAL NOTES:**

- REFER TO SHEET C-103 FOR ADDITIONAL COMPLIANCE INFORMATION.
- ALL CONSTRUCTION SHALL CONFORM TO THE APPLICABLE REGULATIONS AND STANDARDS INCLUDING THE TOWN OF CRANSTON, RIDOT, RIDEP, MUTCD, AND AASHTO.
- THE CONTRACTOR IS SOLELY RESPONSIBLE FOR THE MEANS AND METHODS OF CONSTRUCTION AND FOR CONDITIONS AT THE SITE. THESE PLANS, PREPARED BY ALLEN & MAJOR ASSOCIATES, DO NOT EXTEND TO OR INCLUDE SYSTEMS PERTAINING TO THE SAFETY OF THE CONSTRUCTION CONTRACTOR OR THEIR EMPLOYEES, AGENTS OR REPRESENTATIVES IN THE PERFORMANCE OF THE WORK, OR THE OWNER'S EMPLOYEES, CUSTOMERS, OR THE GENERAL PUBLIC. THE SEAL OF THE ENGINEER AS INCLUDED IN THE PLAN SET DOES NOT EXTEND TO ANY SUCH SAFETY SYSTEMS THAT MAY NOW OR HEREAFTER BE INCORPORATED INTO THESE PLANS. THE CONSTRUCTION CONTRACTOR SHALL PROVIDE THE APPROPRIATE SAFETY SYSTEMS WHICH MAY BE REQUIRED BY THE
- ALL ELEVATIONS REFER TO NAVD 88.
- THE CONTRACTOR SHALL ADHERE TO ALL TERMS & CONDITIONS AS OUTLINED IN THE GENERAL N.P.D.E.S. PERMIT FOR STORMWATER DISCHARGE ASSOCIATED WITH CONSTRUCTION ACTIVITIES.
- IT IS THE RESPONSIBILITY OF THE CONTRACTOR TO REVIEW ALL DRAWINGS AND SPECIFICATIONS ASSOCIATED WITH THE PROJECT WORK SCOPE PRIOR TO THE START OF CONSTRUCTION. SHOULD THE CONTRACTOR FIND A CONFLICT WITH THE DRAWINGS, SPECIFICATIONS, OR RELATIVE CODES, IT IS THE RESPONSIBILITY OF THE CONTRACTOR TO NOTIFY THE ENGINEER AND/OR ARCHITECT PRIOR TO START OF CONSTRUCTION. FAILURE BY THE CONTRACTOR TO NOTIFY THE ENGINEER AND/OR ARCHITECT SHALL CONSTITUTE ACCEPTANCE OF FULL RESPONSIBILITY BY THE CONTRACTOR TO COMPLETE THE SCOPE OF WORK AND/OR DESIGN INTENT OF THE DRAWINGS AND IN FULL COMPLIANCE WITH LOCAL REGULATIONS AND CODES.
- THE DESIGN ENGINEER WAVES ANY AND ALL RESPONSIBILITY AND LIABILITY FOR PROBLEMS WHICH ARISE FROM FAILURE TO FOLLOW THESE PLANS, SPECIFICATIONS, AND/OR THE DESIGN INTENT THEY CONVEY, OR FOR PROBLEMS WHICH ARISE FROM OTHERS' FAILURE TO OBTAIN AND/OR FOLLOW THE GUIDANCE OF THE DESIGN ENGINEER WITH RESPECT TO ANY ERRORS, OMISSIONS, INCONSISTENCIES, AMBIGUITIES, OR CONFLICTS WHICH ARE DISCOVERED OR ALLEGED.



**DIG SAFE**

BEFORE YOU DIG  
CALL 811 OR  
1-888-DIG-SAFE  
1-888-344-7233

BRIAN D. JONES  
No. 11089  
REGISTERED  
PROFESSIONAL ENGINEER  
CIVIL  
01-25-23

PROFESSIONAL ENGINEER FOR  
ALLEN & MAJOR ASSOCIATES, INC.

REV	DATE	DESCRIPTION

APPLICANT/OWNER:  
CPW TRUE STORAGE LLC  
670 N. COMMERCIAL STREET, SUITE 303  
MANCHESTER, NH 03101

PROJECT:  
**SITE REDEVELOPMENT**  
ASSESSORS MAP 8, LOTS 195, 1617 & 2711  
1381 CRANSTON STREET - CRANSTON, RI

PROJECT NO.	2038-08	DATE:	01-25-2023
SCALE:	1" = 20'	DWG.:C-2038-08_UTILITIES	
DESIGNED BY:	JRG	CHECKED BY:	MAM

PREPARED BY:

**ALLEN & MAJOR ASSOCIATES, INC.**  
civil engineering • land surveying  
environmental consulting • landscape architecture  
www.allenmajor.com  
100 COMMERCE WAY, SUITE 5  
WOBURN MA 01801  
TEL: (781) 935-6889  
FAX: (781) 935-2896

WOBURN, MA • LAKEVILLE, MA • MANCHESTER, NH

THIS DRAWING HAS BEEN PREPARED IN DIGITAL FORMAT. CLIENT/CUSTOMER'S REPRESENTATIVE OR CONSULTANTS MAY BE PROVIDED COPIES OF DRAWINGS AND SPECIFICATIONS FOR HIS/HER INFORMATION AND/OR SPECIFIC USE ON THIS PROJECT. DUE TO THE POTENTIAL THAT THE PROVIDED INFORMATION MAY BE MODIFIED UNINTENTIONALLY OR OTHERWISE, ALLEN & MAJOR ASSOCIATES, INC. MAY REMOVE ALL INDICATION OF THE DOCUMENT'S AUTHORSHIP ON THE DIGITAL MEDIA. PRINTED REPRESENTATIONS OR PORTABLE DOCUMENT FORMAT OF THE DRAWINGS AND SPECIFICATIONS ISSUED SHALL BE THE ONLY RECORD COPIES OF ALLEN & MAJOR ASSOCIATES, INC.'S WORK PRODUCT.

DRAWING TITLE:	SHEET No.
UTILITIES PLAN	C-104F

Copyright ©2022 Allen & Major Associates, Inc.  
All Rights Reserved